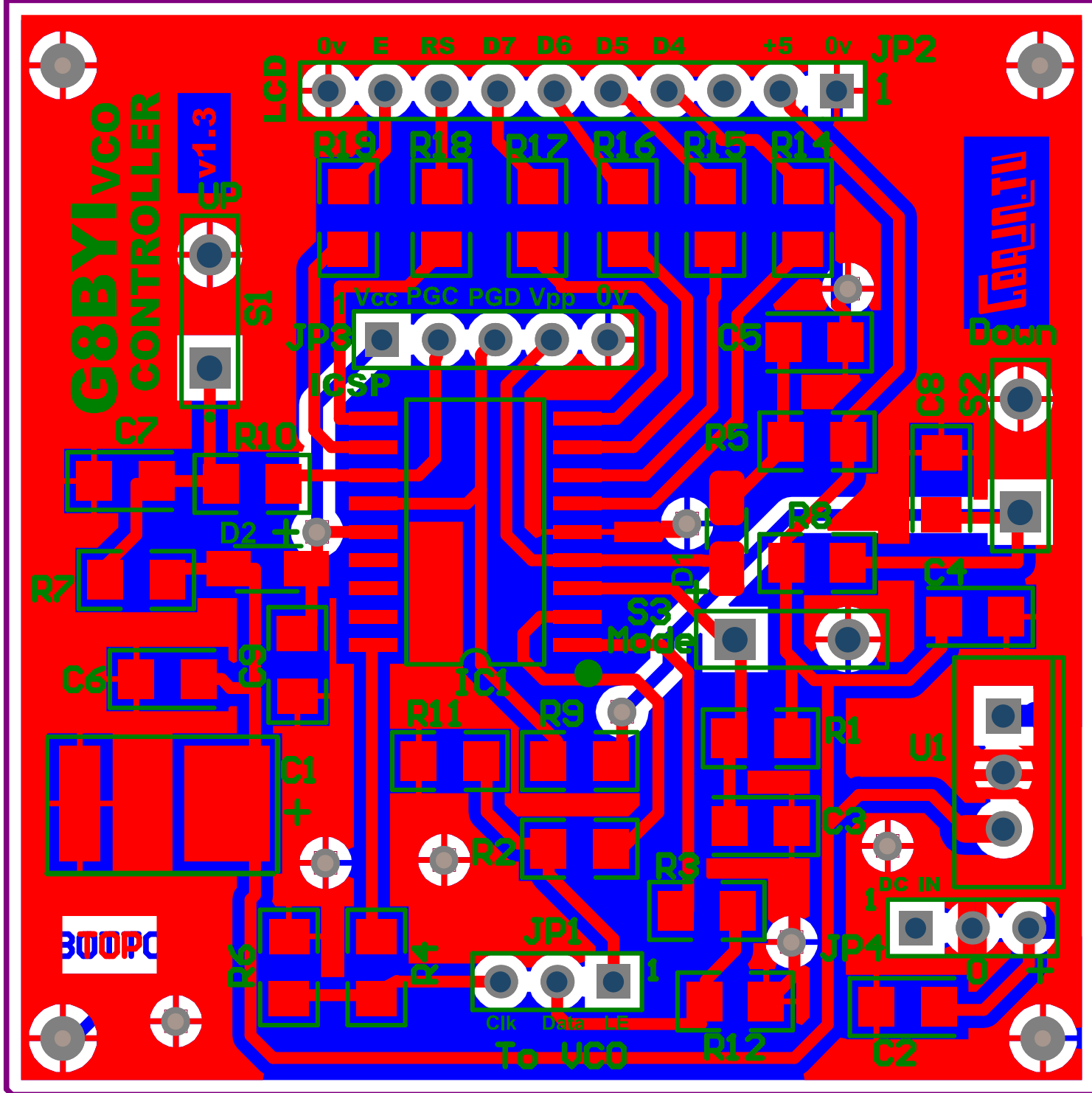


**Basic Version
using Version 1.3 board.**
Components required for LCD version not shown

Title		
Size A4	Number	Revision
Date: 06/07/2013	Sheet of	
File: C:\CAD Files\...BY1 fullv1.3.SchDoc	Drawn By:	

G8BYI VCO CONTROLLER



Comment	Description	Designator	Footprint	LibRef	Quantity
100uF	Polarized Capacitor (Surface Mount)	C1	CC5750-2220	Cap Pol3	1
330nF	Capacitor (Semiconductor SIM Model)	C2, C4, C6	CC3216-1206	Cap Semi	3
100nF	Capacitor (Semiconductor SIM Model)	C5	CC3216-1206	Cap Semi	1
Cap	Capacitor	C9	CR3216-1206	Cap	1
BAT54WS	Default Diode	D1, D2	SOD323	Diode	2
PIC16F628A-I/SO	FLASH-Based 8-Bit CMOS Microcontroller with nanoWatt Technology, 2K (x14-Bit words) FLASH, 224 Bytes SRAM, 18-Pin SOIC, 3.0 to 5.5V Supply Range, Extended Temperature	IC1	SOIC18	PIC16F628A-E/SO	1
Header 3	Header, 3-Pin	JP1, JP4	HDR1X3	Header 3	2
Header 10	Header, 10-Pin	JP2	HDR1X10	Header 10	1
Header 5	Header, 5-Pin	JP3	HDR1X5	Header 5	1
470	Resistor	R2, R3, R4	CR3216-1206	Res3	3
6K8	Resistor	R5	CR3216-1206	Res3	1
10k	Resistor	R6, R11, R12, R14	CR3216-1206	Res3	4
1k8	Resistor	R15, R16, R17, R18, R19	CR3216-1206	Res3	5
SW-PB	Switch	Stepper Button	SPST-2	SW-PB	1
MC78M05	Three-Terminal Medium	U1	221A-09	MC78M05BT	1